

Attn.: Tracy

Email Address: sales20@bakovisionled.com

WhatsApp/Phone Number: +86 15367558232

BDF Series

Innovative Outdoor Die-Cast LED Display

HD Resolution, Fully Front Access Option, Slim and Stylish Die Cast Design, Inventory Ready



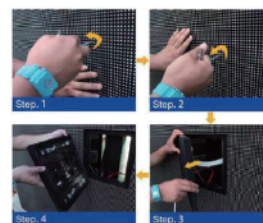
Outdoor High Definition

- > Start from P2.5mm, outdoor rated
- > IP65 rating for front and rear
- > High Contrast
- > Unique mask for anti-glare



Fully Front Access Option

- > Option for complete wall mounting
- > Module, Power Supply, Receiver Card, Cables all accessible from front
- > Also rear accessible
- > Fast lock system design guarantees a quick and easy installation



Fast Delivery

- > Inventory ready
- > Bulky Stock for fast delivery
- > Surpassing price advantage

Slim and Variable Installation

- > Die-Cast aluminum and slim cabinet
- > For fixed installation and stage rental both
- > Wall mounting, ceiling hanging, or pillar standing



BDF / Specifications

	BDF-2	BDF-3	BDF-4	BDF-5
Physical Pitch	2.5mm	3.076mm	4mm	5mm
Pixel Configuration	SMD	SMD	SMD	SMD
Pixel Density	160,000 pixels/m ²	105,688 pixels/m ²	62,500 pixels/m ²	40,000 pixels/m ²
Module Dimensions (W× H) (mm)	320 × 160	320 × 160	320 × 160	160 × 160/320 × 160
Panel Dimensions (mm)	960 × 960 × 112	960 × 960 × 112	960 × 960 × 112	960 × 960 × 112
NO.of Modules Per Panel (W × H)	3 × 6	3 × 6	3 × 6	6 × 6/3 × 6
Physical Resolution of Module (W × H)	128 × 64	104 × 52	80 × 40	32 × 32/64 × 32
Physical Resolution of Panel (W × H)	384 × 384	312 × 312	240 × 240	192 × 192
Panel Material	Die -Cast Aluminum	Die -Cast Aluminum	Die -Cast Aluminum	Die -Cast Aluminum
Single Cabinet Weight	35 kg	35 kg	35 kg	35 kg
Gray Scale	16 bit	16 bit	16 bit	16 bit
Colours	281 trillion	281 trillion	281 trillion	281 trillion
Contrast Ratio	4,000 : 1	4,000 : 1	2,000 : 1 / 4,000 : 1	2,000 : 1 / 4,000 : 1
Average Power Consumption	240 W / panel	240 W / panel	240 W / panel	240 W / panel
Max Power Consumption	600 W / panel	600 W / panel	600 W / panel	600 W / panel
Refresh Rate	>1,920 Hz	>1,920 Hz	>1,920 Hz	>1,920 Hz
Brightness	≥5000 nits	≥5000 nits	≥5000 nits	≥5,500 nits
Horizontal Viewing Angle	160°	160°	160°	160°
Vertical Viewing Angle	140°	140°	140°	140°
Expected Lifetime	100,000 Hrs	100,000 Hrs	100,000 Hrs	100,000 Hrs
Servicing	Rear	Rear	Rear	Fully Front / Rear
IP Rating (Front/Rear)	IP65 / IP54	IP65 / IP54	IP65 / IP54	IP65 / IP54
Operating Temp/Humidity	-20 C - 60 C / 10% - 90%	-20 C - 60 C / 10% - 90%	-20 C - 60 C / 10% - 90%	-20 C - 60 C / 10% - 90%
Storage Temp/Humidity	-30 C - 60 C / 10% - 90%	-30 C - 60 C / 10% - 90%	-30 C - 60 C / 10% - 90%	-30 C - 60 C / 10% - 90%

Typical Applications:

- DOOH Display
- Stage Rental
- Window Display
- Bar Club
- Car Show
- Building Facade
- Stadium
- Exhibition Hall
- Reception Hall
- Chain Store
- Theme Resort
- Shopping Mall

BDF / Specifications

	BDF-6	BDF-8	BDF-10
Physical Pitch	6.67mm	8mm	10mm
Pixel Configuration	SMD	SMD	SMD
Pixel Density	22,477 pixels/m ²	15,625 pixels/m ²	10,000 pixels/m ²
Module Dimensions (W × H) (mm)	320 × 320/320 × 160	320 × 320/320 × 160	320 × 320/320 × 160
Panel Dimensions (mm)	960 × 960 × 112	960 × 960 × 112	960 × 960 × 112
NO.of Modules Per Panel (W × H)	3 × 3/3 × 6	3 × 3/3 × 6	3 × 3/3 × 6
Physical Resolution of Module (W × H)	48 × 48/48 × 24	40 × 40/40 × 20	32 × 32/32 × 16
Physical Resolution of Panel (W × H)	144 × 144	120 × 120	96 × 96
Panel Material	Die -Cast Aluminum	Die -Cast Aluminum	Die -Cast Aluminum
Single Cabinet Weight	35 kg	35 kg	35 kg
Gray Scale	16 bit	16 bit	16 bit
Colours	281 trillion	281 trillion	281 trillion
Contrast Ratio	2,000 : 1 / 4,000 : 1	2,000 : 1 / 4,000 : 1	2,000 : 1 / 4,000 : 1
Average Power Consumption	350 W/m ²	350 W/m ²	350 W/m ²
Max Power Consumption	700 W/m ²	700 W/m ²	700 W/m ²
Refresh Rate	>1,920 Hz	>1,920 Hz	>1,920 Hz
Brightness	≥6,000nits	≥5,500nits	≥4,000nits
Horizontal Viewing Angle	160°	160°	160°
Vertical Viewing Angle	140°	140°	140°
Expected Lifetime	100,000 Hrs	100,000 Hrs	100,000 Hrs
Servicing	Fully Front / Rear	Fully Front / Rear	Fully Front / Rear
IP Rating (Front/Rear)	IP65 / IP54	IP65 / IP54	IP65 / IP54
Operating Temp/Humidity	-20°C - 60°C / 10% - 90%	-20°C - 60°C / 10% - 90%	-20°C - 60°C / 10% - 90%
Storage Temp/Humidity	-30°C - 60°C / 10% - 90%	-30°C - 60°C / 10% - 90%	-30°C - 60°C / 10% - 90%

Typical Applications:

- ✦ DOOH Display
- ✦ Stage Rental
- ✦ Window Display
- ✦ Bar Club
- ✦ Car Show
- ✦ Building Facade
- ✦ Stadium
- ✦ Exhibition Hall
- ✦ Reception Hall
- ✦ Chain Store
- ✦ Theme Resort
- ✦ Shopping Mall